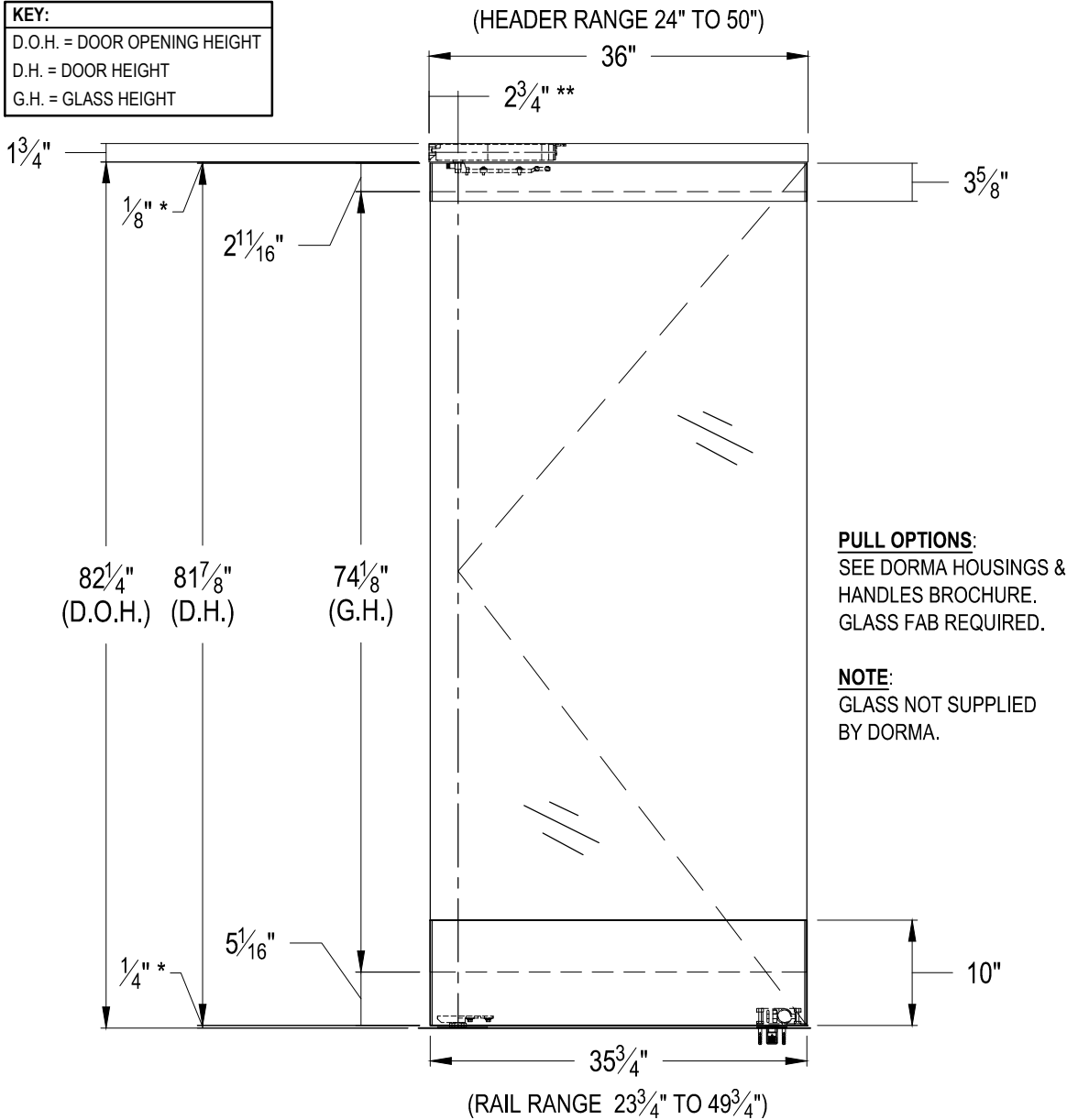


**KEY:**

D.O.H. = DOOR OPENING HEIGHT

D.H. = DOOR HEIGHT

G.H. = GLASS HEIGHT

**ART. NO. P10S.5.123 (SHOWN)****SINGLE DOOR SYSTEM FOR  $\frac{1}{2}"$  GLASS INCLUDES...**

- QTY. 1 - #233.040 4- $\frac{1}{2}"$  HEADER PREPPED FOR RTS88 CLOSER [SPECIFY FUNCTION]
- QTY. 1 - #225.001 3- $\frac{5}{8}"$  TOP RAIL WITH #928.006 ARM
- QTY. 1 - #225.305 10" BOTTOM RAIL WITH #928.055 PIVOT AND #925.019 LOCK
- QTY. 1 - #225.998 MORTISE THUMBTURN CYLINDER WITH SPLIT RING
- QTY. 1 - #225.999 MORTISE KEY CYLINDER WITH SPLIT RING
- QTY. 1 - #932.033 1- $\frac{1}{2}"$  DUST PROOF STRIKE

**ART. NO. P10S.5.123.X****PAIRED DOOR SYSTEM FOR  $\frac{1}{2}"$  GLASS INCLUDES...**

- QTY. 1 - #233.042 4- $\frac{1}{2}"$  HEADER PREPPED FOR RTS88 CLOSER [SPECIFY FUNCTION]
- QTY. 2 - #225.001 3- $\frac{5}{8}"$  TOP RAIL WITH #928.006 ARM
- QTY. 2 - #225.305 10" BOTTOM RAIL WITH #928.055 PIVOT AND #925.019 LOCK
- QTY. 2 - #225.998 MORTISE THUMBTURN CYLINDER WITH SPLIT RING
- QTY. 2 - #225.999 MORTISE KEY CYLINDER WITH SPLIT RING
- QTY. 2 - #932.033 1- $\frac{1}{2}"$  DUST PROOF STRIKE

\* OPENING CLEARANCES MAY VARY BASED ON SITE CONDITIONS. STANDARD CLEARANCES OF  $\frac{1}{8}"$  USED UNLESS OTHERWISE INDICATED.

\*\* PIVOT POINT CENTER LINE IS FROM FINISHED JAMB.



1520 Jabez Run  
Suite 303  
Millersville, MD 21108  
800.451.0649

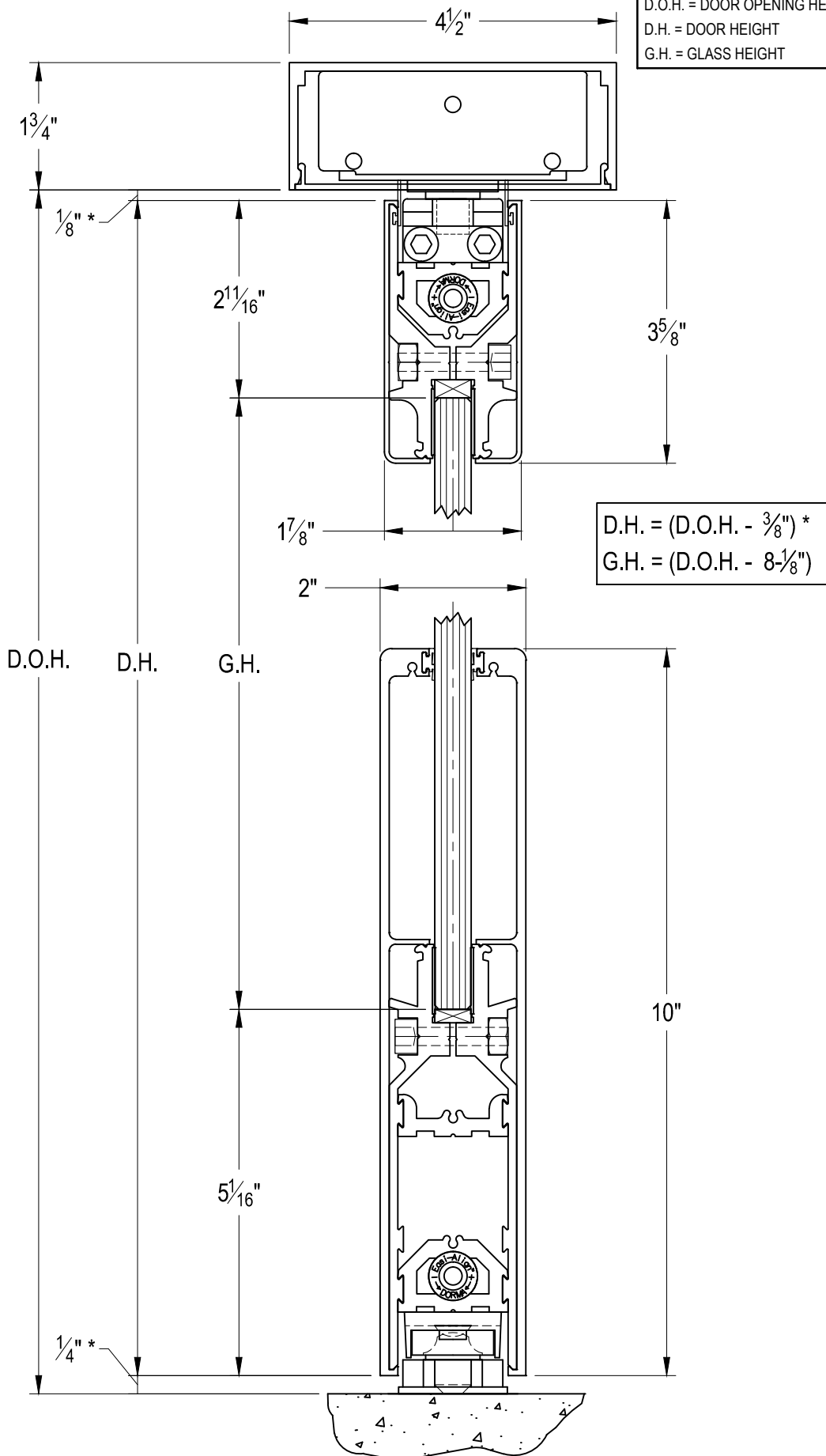
REV.	DATE
1	01/04/10
2	07/19/16

**TOLERANCES**  
UNLESS OTHERWISE  
SPECIFIED:  
DECIMAL .XXX =  $\pm .005$   
.XX =  $\pm .01$   
FRACTION  $\pm 1/16$   
DEGREE  $\pm .3^\circ$

**DORMA EASI-FRONTS DOOR SET**  
**TYPE "P" WITH LOCK - P05-10S-3S-01\_45-RTS**

**PROPRIETARY AND CONFIDENTIAL**  
This document and information is the proprietary property of DORMA GLAS. Any party, by accepting this document and information, assumes custody and control hereof and agrees that such is given in confidence and this document and the information set forth therein will not be copied, used or reproduced in whole or in part, nor its contents revealed to any person in any manner that would cause the loss or impairment of the owner's legal rights including, but not limited to, the owner's common law copyrights thereto.

DRAWN BY: MW
DATE: 06.19.09
SCALE: $\frac{3}{4}"=1'-0"$
SHEET: 1 OF 3
DRAWING NO. P05-10S-3S-01_45-RTS
DO NOT SCALE DRAWING



**KEY:**

D.O.H. = DOOR OPENING HEIGHT

D.H. = DOOR HEIGHT

G.H. = GLASS HEIGHT

**DORMA**  
1520 Jabez Run  
Suite 303  
Millersville, MD 21108  
800.451.0649

REV.	DATE
1	01/04/10
2	07/19/16

**TOLERANCES**  
UNLESS OTHERWISE  
SPECIFIED:  
DECIMAL .XXX = ± .005  
.XX = ± .01  
FRACTION 1/16  
DEGREE ± 3°

**DORMA EASI-FRONTS DOOR SET  
TYPE "P" WITH LOCK - P05-10S-3S-01\_45-RTS**

**PROPRIETARY AND CONFIDENTIAL**  
This document and information is the proprietary property of DORMA GLAS. Any party, by accepting this document and information, assumes custody and control hereof and agrees that such is given in confidence and this document and the information set forth therein will not be copied, used or reproduced in whole or in part, nor its contents revealed to any person in any manner that would cause the loss or impairment of the owner's legal rights including, but not limited to, the owner's common law copyrights thereto.

DRAWN BY: MW
DATE: 06.19.09
SCALE: 1:2
SHEET: 2 OF 3
DRAWING NO. P05-10S-3S-01_45-RTS
DO NOT SCALE DRAWING

\* OPENING CLEARANCES MAY VARY BASED ON SITE CONDITIONS. STANDARD CLEARANCES SHOWN ARE USED IN FORMULA.

**KEY:**

D.O.H. = DOOR OPENING HEIGHT

D.H. = DOOR HEIGHT

G.H. = GLASS HEIGHT

**DORMA**  
1520 Jabez Run  
Suite 303  
Millersville, MD 21108  
800.451.0649

REV.	DATE
①	01/04/10
②	07/19/16

**TOLERANCES**  
UNLESS OTHERWISE SPECIFIED:

DECIMAL .XXX = ± .005

.XX = ± .01

FRACTION ± 1/16

DEGREE ± 3°

# DORMA EASI-FRONT'S DOOR SET TYPE "P" WITH LOCK - P05-10S-3S-01\_45-RTS

**PROPRIETARY AND CONFIDENTIAL**  
This document and information is the proprietary property of DORMA GLAS. Any party, by accepting this document and information, assumes custody and control hereof and agrees that such is given in confidence and this document and the information set forth therein will not be copied, used or reproduced in whole or in part, nor its contents revealed to any person in any manner that would cause the loss or impairment of the owner's legal rights including, but not limited to, the owner's common law copyrights thereto.

DRAWN BY: MW

DATE: 06.19.09

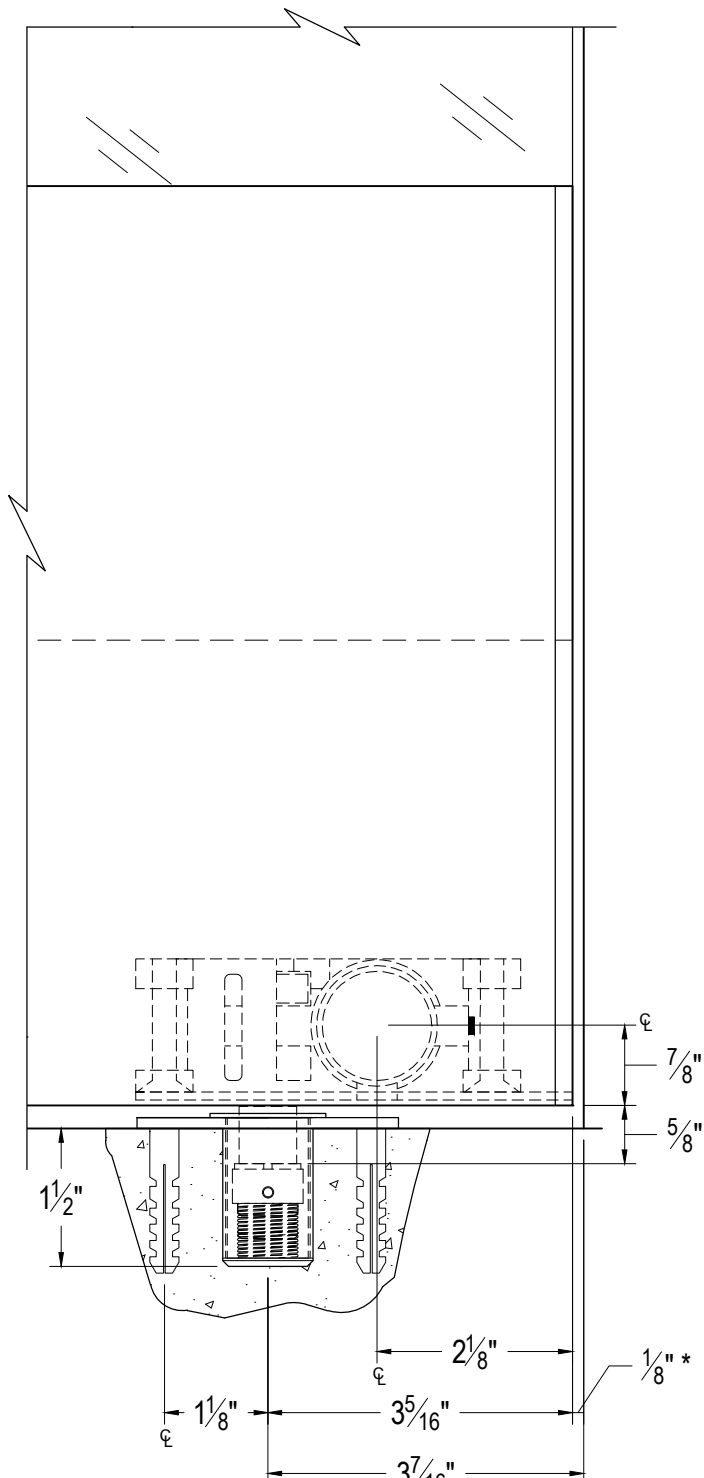
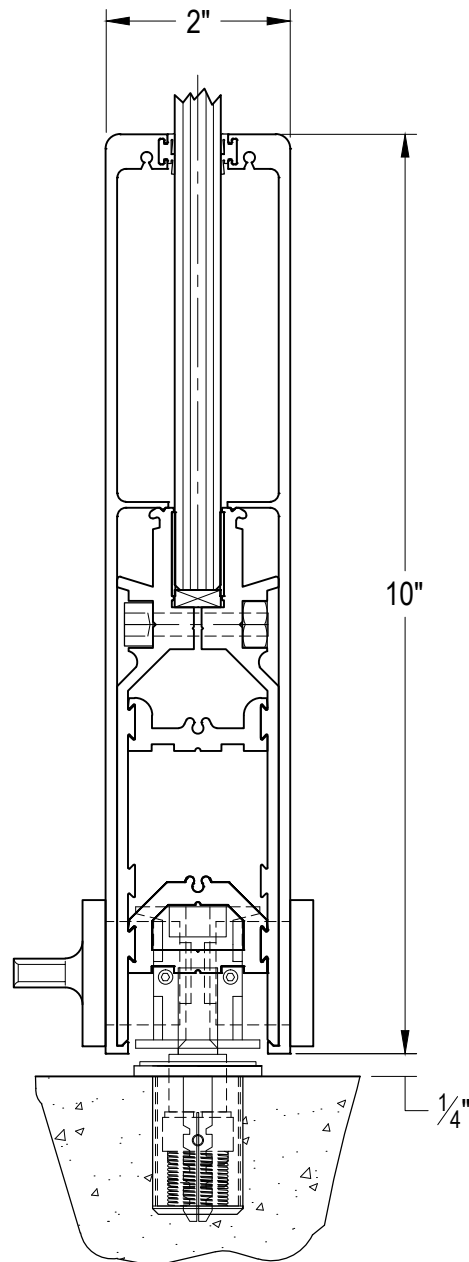
SCALE: 1:2

SHEET: 3 OF 3

DRAWING NO.

P05-10S-3S-01\_45-RTS

DO NOT SCALE DRAWING

**ELEVATION VIEW OF LOCK LOCATION****BOTTOM RAIL SECTION  
AT LOCK LOCATION**

NOTE: DIMENSIONS SHOWN INCLUDE THE ENDCAP AND THE COVER.

\* OPENING CLEARANCES MAY VARY BASED ON SITE CONDITIONS. STANDARD CLEARANCES SHOWN ARE USED IN FORMULA.